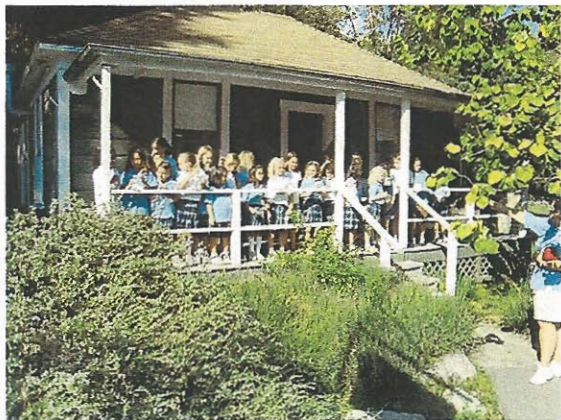


Lizzie's Trail Inn

AND

Richardson House



Sierra Madre's two museums, Lizzie's Trail Inn and Richardson House, offer special tours to Scout troops, local grade school classes, and to other groups by appointment, outside of the normal hours of operation.

Every weekend, hikers and visitors to the area stop in to explore the treasures of Sierra Madre's past and learn a little more about our collective history. You are invited to join us at Lizzie's Trail Inn and Richardson House on Saturdays from 10:00 A.M. until Noon.

Photo Left: A class enjoys their history lesson at Richardson House.

THE SMHPS HOSTS AHSLAC 2011 MINI-CONFERENCE

Lizzie's and Richardson house were the site for The Associated Historical Societies of Los Angeles County 2011 fall Mini-conference. The group represents 45 historic societies here in L.A. County. It's the first time we have hosted one of the mini-conferences. Jay Whitcraft welcomed the group to the Mt. Wilson Trail park next to Richardson House. Maurice Orme, who lived in Richardson House as a youngster, gave a well received talk on Lizzie's. After a delicious lunch in the park, the group toured both museums.

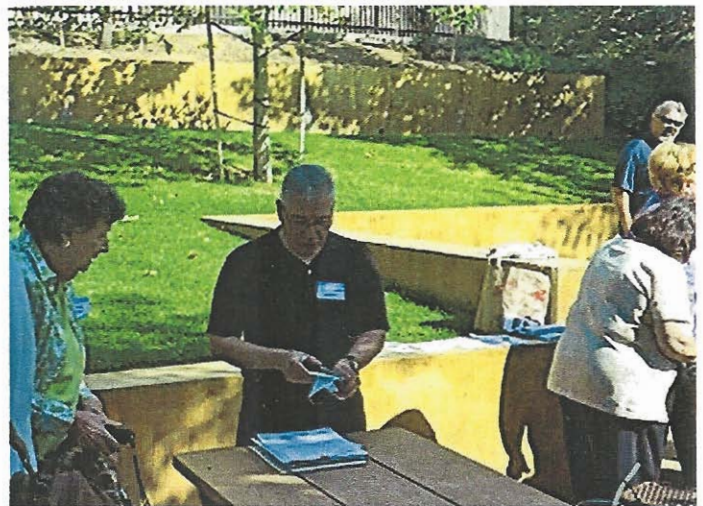


Photo Above: AHSLAC President Daniel Munoz with unidentified members of the Association in Mt. Wilson Trail Park, which is adjacent to the city's two museums.



Photo Above: Before lunch, museum volunteer Ron Finely and speaker Maurice Orme enjoy a moment in the shade.

Photo Right: Several AHSLA members on the porch of Richardson House during their tour.

